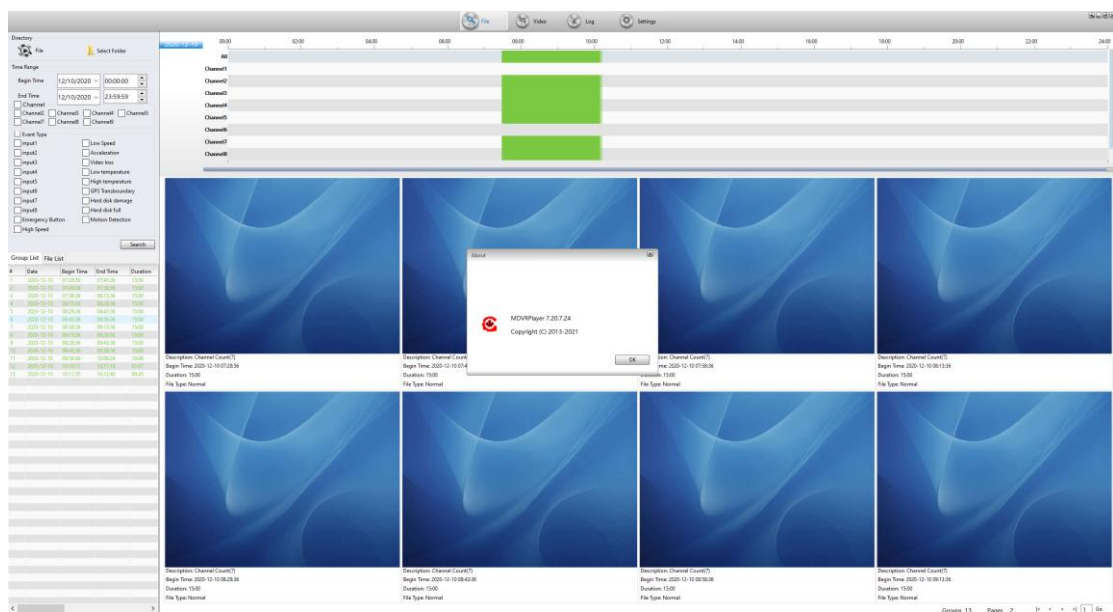




CMVTC MDVR Player User Manual V 6.5



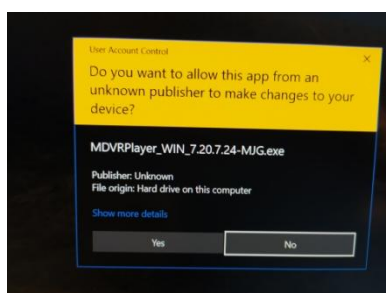
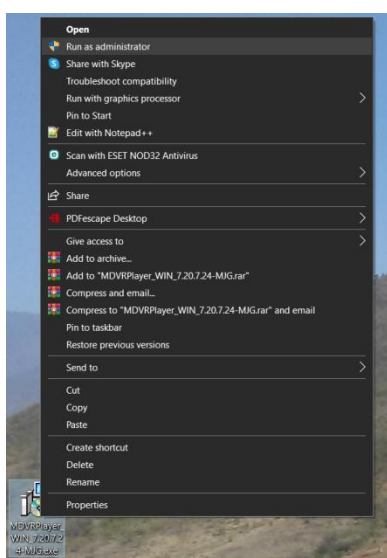
Index

1. Installation Instructions of the MDVR Player	2
1.1 Install MDVR Player as Administrator	2
This version MDVR Player is not yet Signed, Yes	2
Select installation language	2
1.2 Setup Wizard	3
1.3 Select installation path	3
1.4 Select Start Menu Name	3
1.5 Select Additional Task	4
1.6 Finish setup	5
1.7 UnClick "Launch MDVRPlayer" and click "Finish"	5
2. Run MDVR Player as Administrator	6
2.1 Add Google Map API Key	7
3. The main interface of Playback Analysis	7
3.1 File Query	7
3.2 Query results: Select the timeframe you want to view from the left side Date/Time list.	8
3.3 Merge video files (Optional)	9
3.4 Playback video	9
3.5 Single Frame Advance	10
3.5 AVI Converter	10
3.6 Report	11
3.7 Log search	12
4. System setup	14
5. Users Management	15

*Images and process may change. Contact CMVTC for any support or installation assistance.

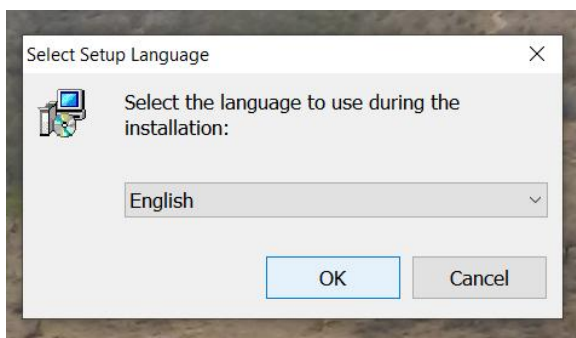
1. Installation Instructions of the MDVR Player

1.1 Install MDVR Player as Administrator



This version MDVR Player is not yet Signed, Yes
You may also get a Windows 10 Notice, select Run
Anyway

Select installation language



1.2 Setup Wizard

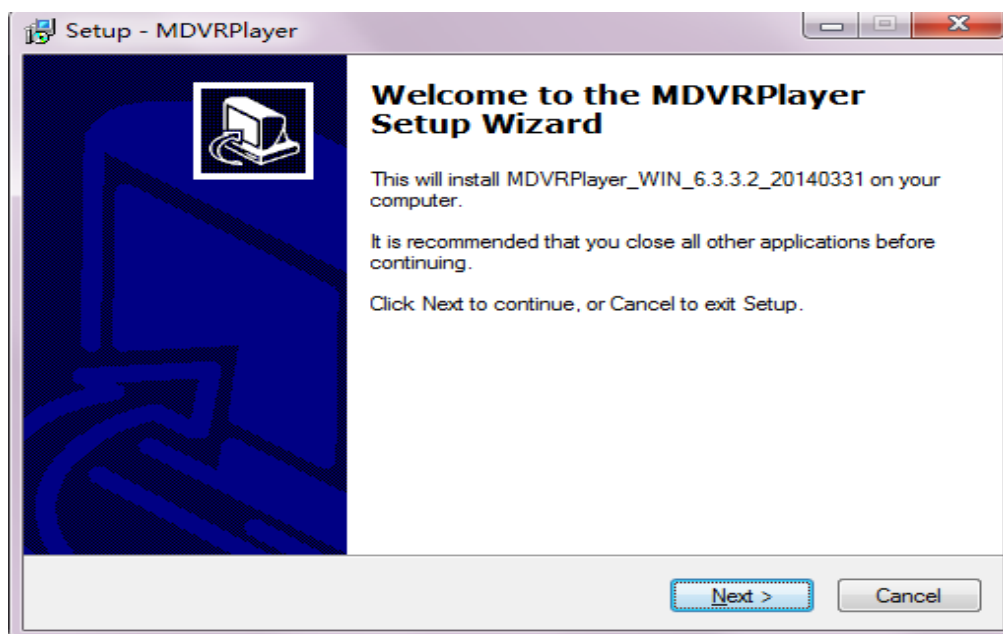


Figure 1.2 installation interface

1.3 Select installation path

click "Next", come into installation path interface

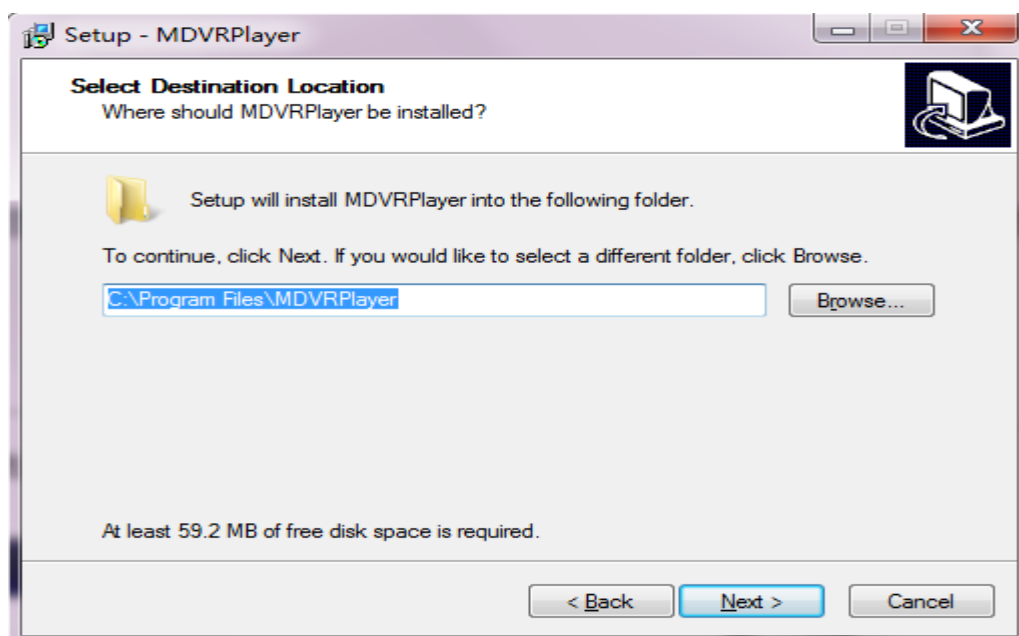


Figure 1.3 installation path interface

1.4 Select Start Menu Name

Select Start Menu Name, then click "Next" to continue.

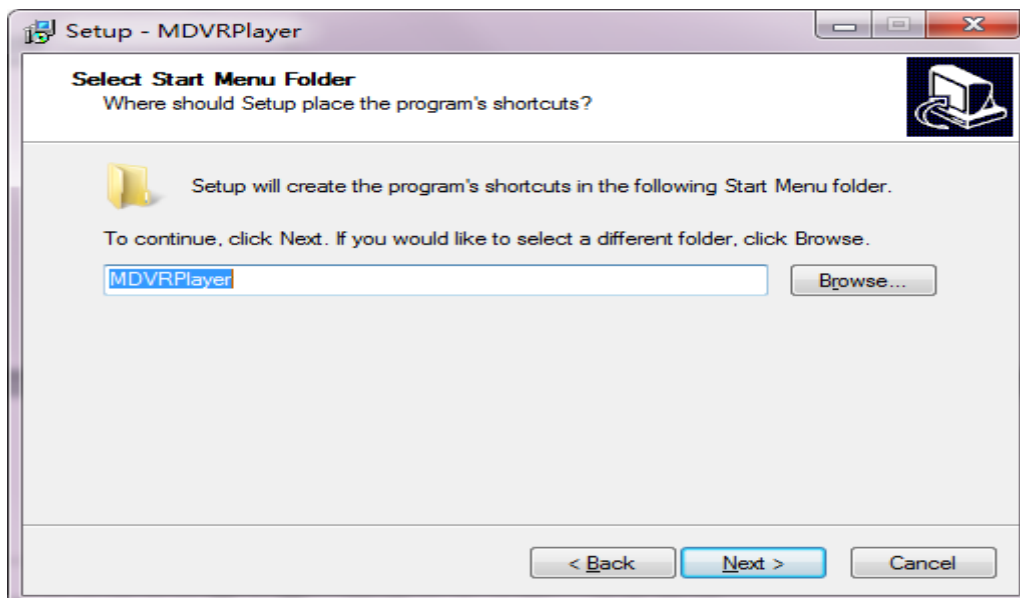


Figure 1.4 select name

1.5 Select Additional Task

Select Additional Task (whether to create a desktop icon), then click "Next".

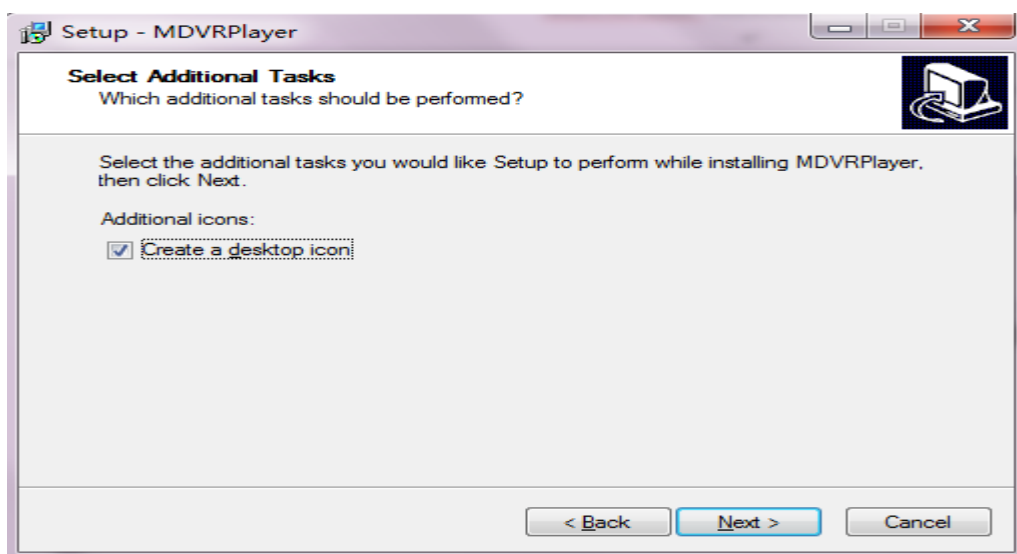


Figure 1.5 Choose whether to create a desktop icon

1.6 Finish setup

click "install", finish the Setup Wizard.

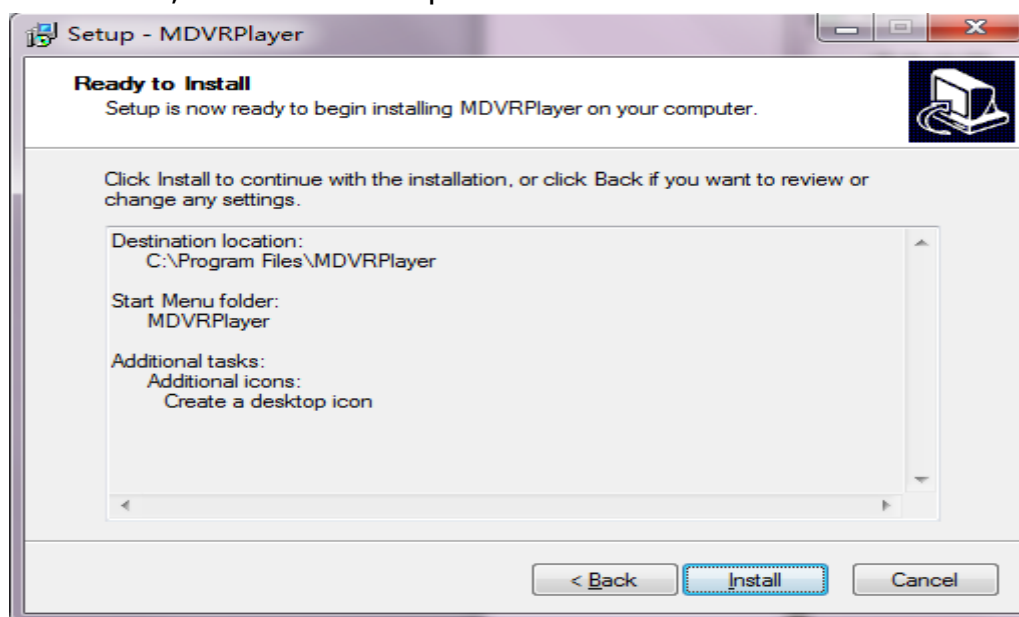
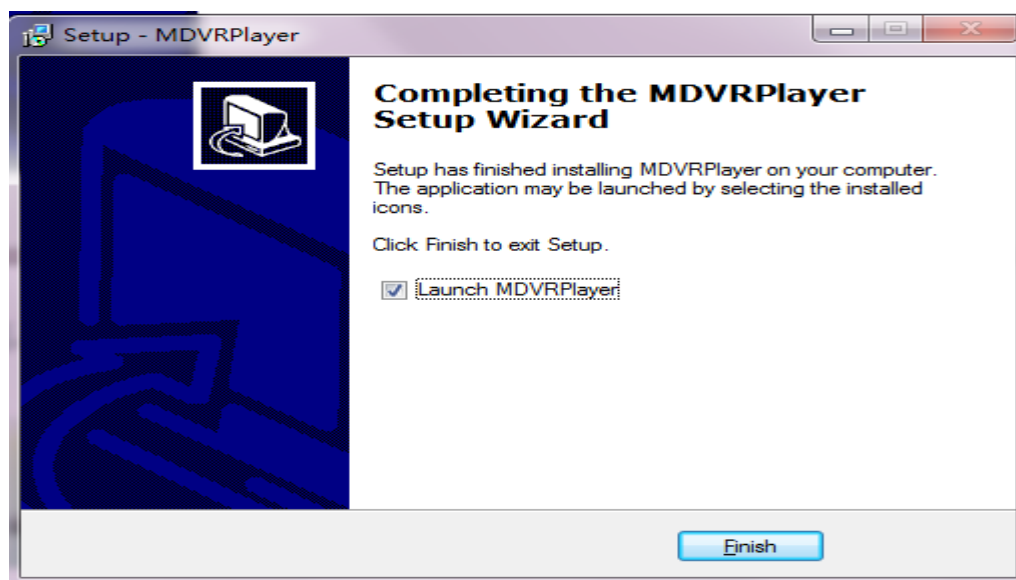


Figure 1.6 execute the installation

1.7 **UnClick** "Launch MDVRPlayer" and click "Finish".

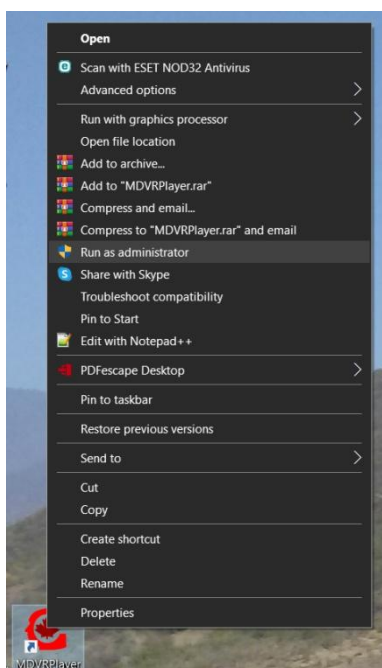


2. Run MDVR Player as Administrator

Right-click the Desktop shortcut

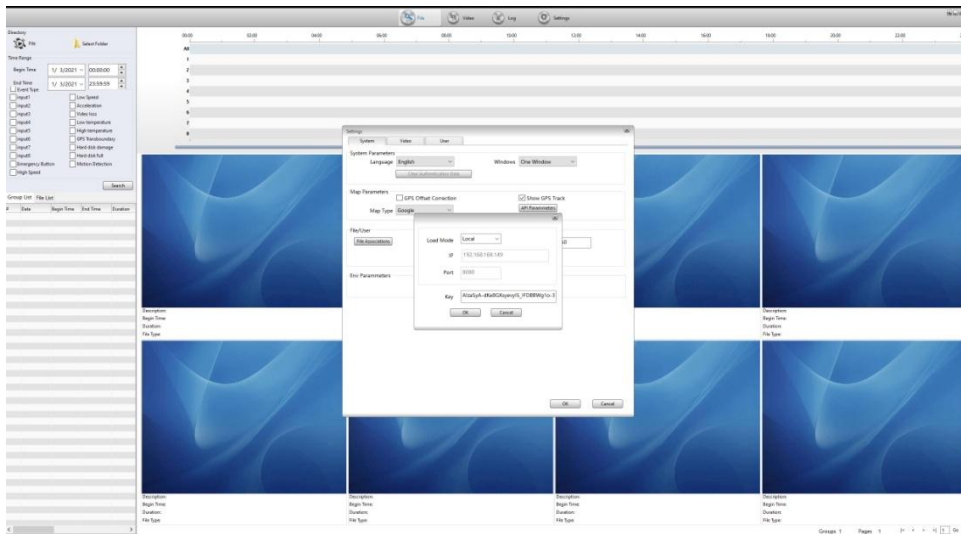


, Select Run as Administrator



Select Yes on Signature Notice

2.1 Add Google Map API Key



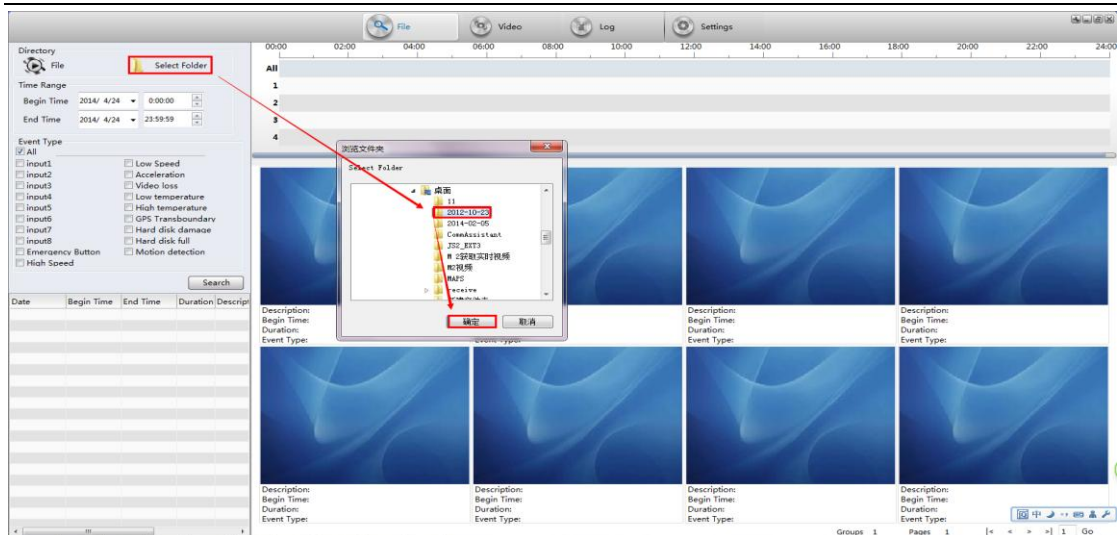
Click on Settings, API Parameters and Enter API Key acquired from CMVTC. Click on OK, OK, and Exit the MDVR Player.

You can run the MDVR Player as standard User from now on.

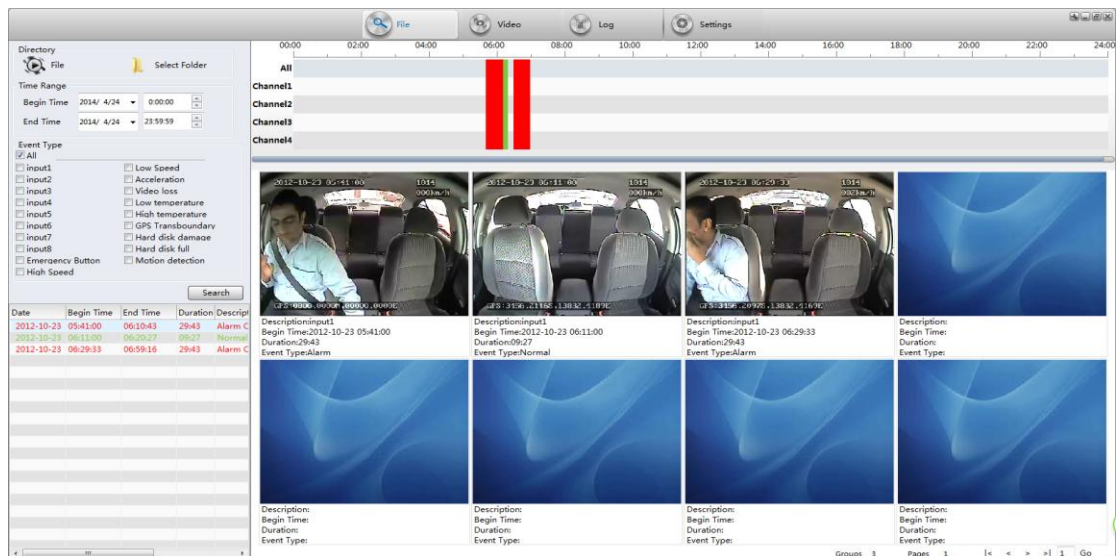
3. The main interface of Playback Analysis

3.1 File Query

Click the "select folder" button, Select the drive letter for the SD or SSD connected to your computer, choose the folder (date) you want to play,

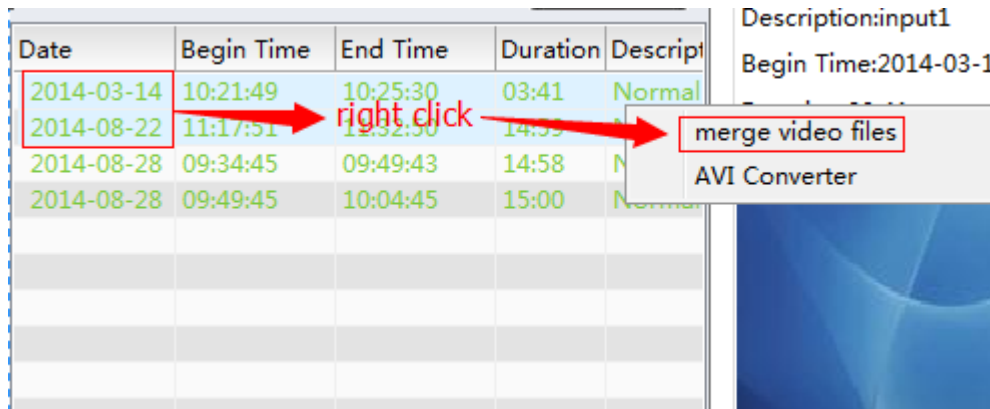


3.2 Query results: Select the timeframe you want to view from the left side Date/Time list.



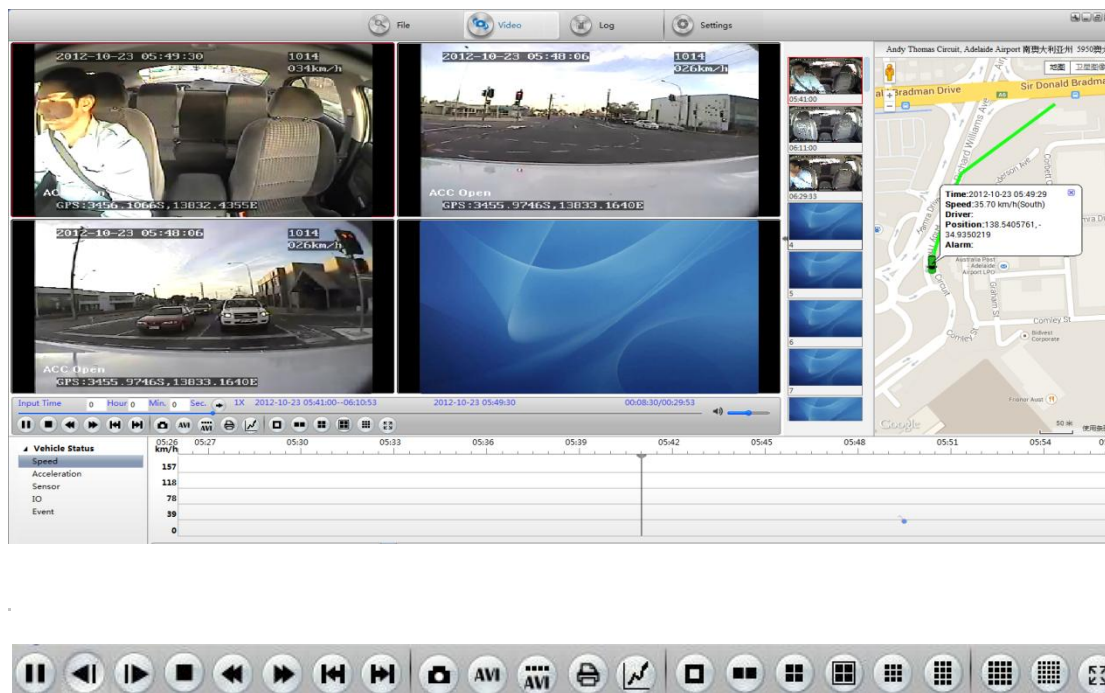
Optional; Press shift button and choose files that you want merge. The merge here will merge the video files of all of the 4 channels into a single video file.

3.3 Merge video files (Optional)








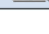


3.4 Playback video


You can see the location, video, audio and telemetry of your vehicle on the map.




Introductions of icons

Icon	function
	Play/Stop
	Stop
	Slow play
	Fast play
	Previous
	Next
	Snapshot
	I frame forward
	1 seconds

3.5 Single Frame Advance

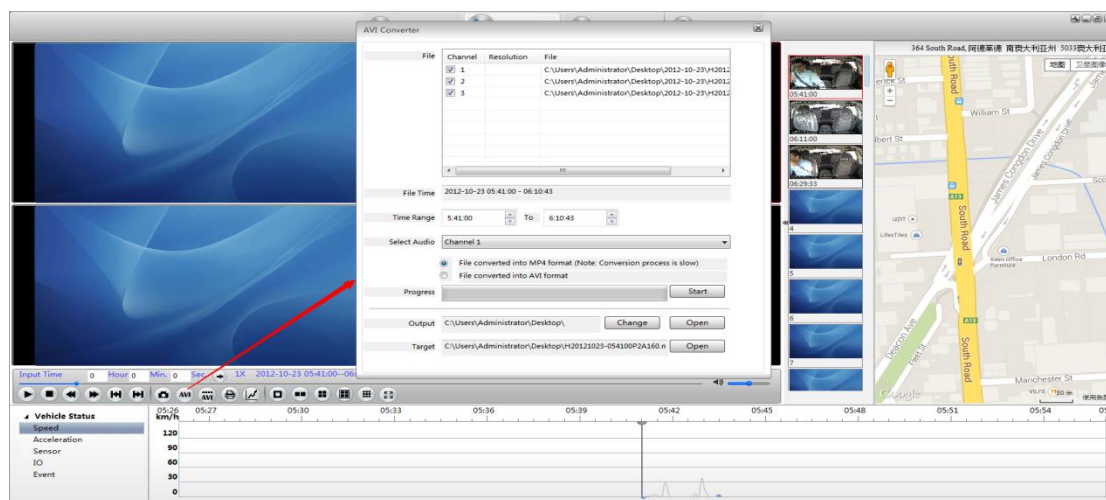
Pause the Video, Press  to advance the video by a single frame.

Press  to reverse.

Press  to Snap a picture of the selected window.

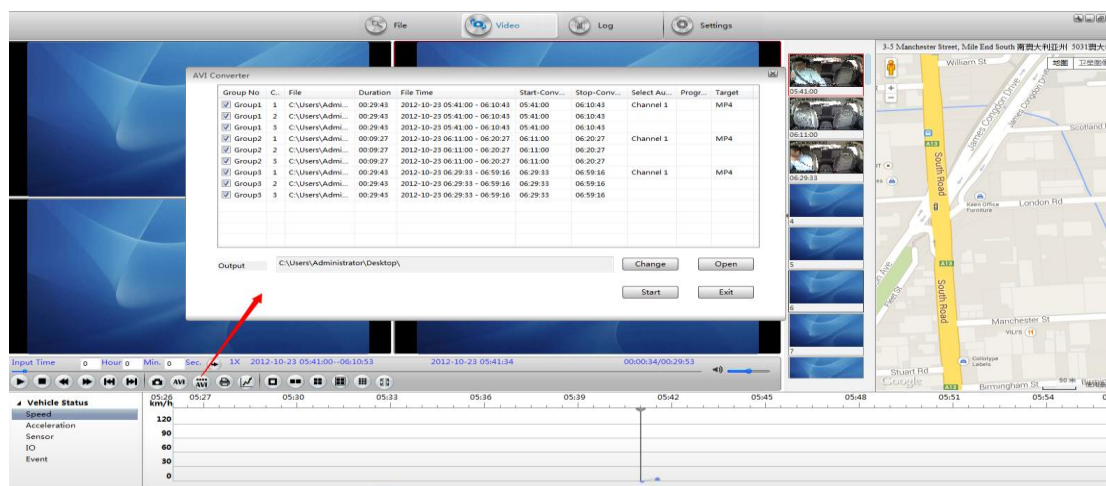
3.5 AVI Converter

Single channel converter. This convert will convert the video files of each channels if individually selected, or convert all selected channels into 1 video file, and you can only convert the video file with single time range every time.



For video spanning more than a single DVR recorded Video File:

Multi-Files converted into AVI format. This is same as the AVI convert above, but this convert can be applied with the video file with multi time ranges. After the convert, each time range will have 1 video file.



3.6 Report

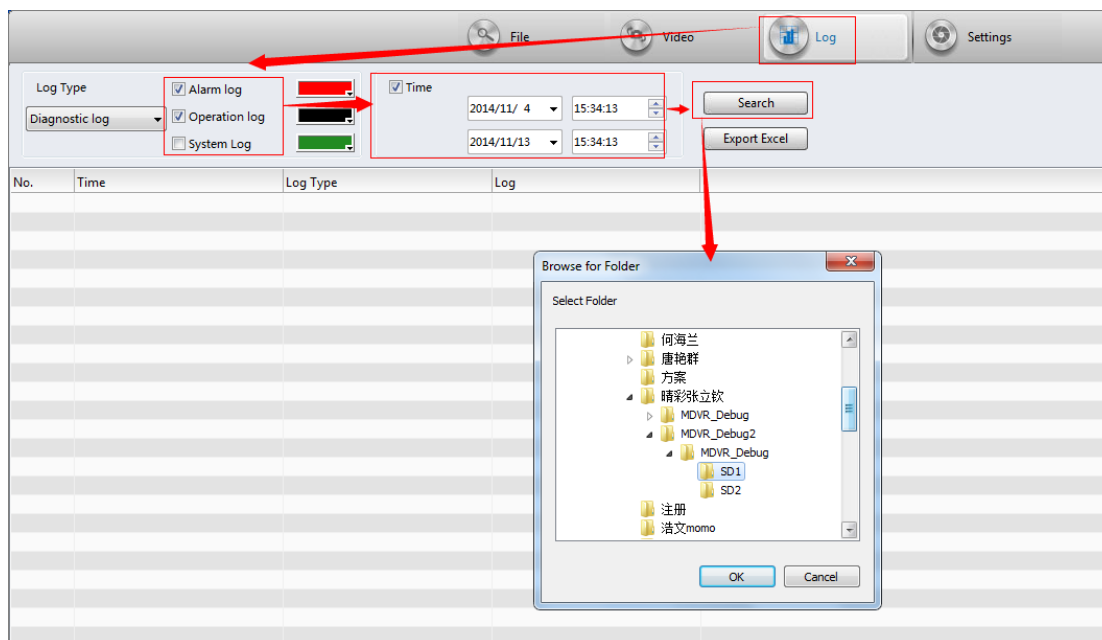
You can add information in the blank area when you print this page. You can print this page as a PDF for a digital copy.



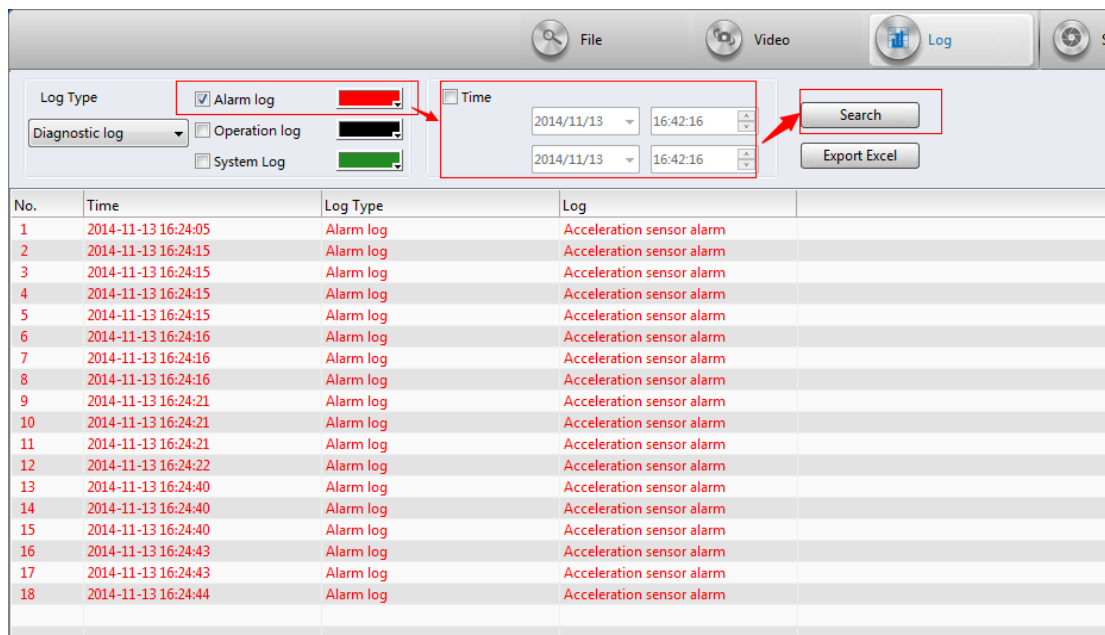


3.7 Log search

Click "search", add your SD card or HDD/SSD, and you'll see log in your card or HDD/SSD.



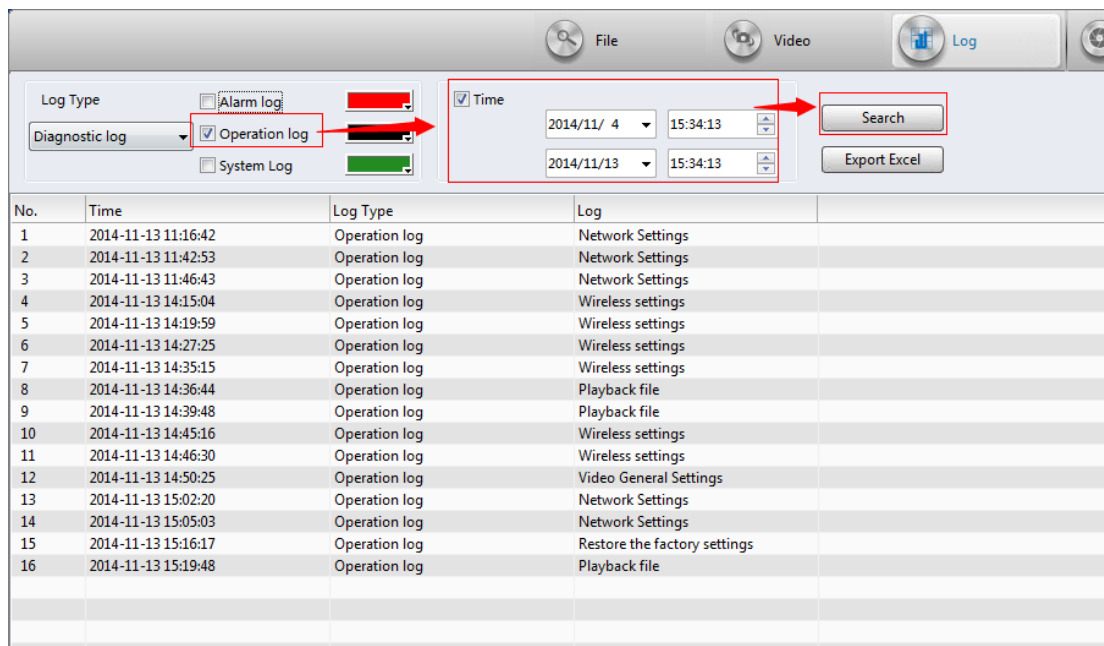
Alarm log :



No.	Time	Log Type	Log
1	2014-11-13 16:24:05	Alarm log	Acceleration sensor alarm
2	2014-11-13 16:24:15	Alarm log	Acceleration sensor alarm
3	2014-11-13 16:24:15	Alarm log	Acceleration sensor alarm
4	2014-11-13 16:24:15	Alarm log	Acceleration sensor alarm
5	2014-11-13 16:24:15	Alarm log	Acceleration sensor alarm
6	2014-11-13 16:24:16	Alarm log	Acceleration sensor alarm
7	2014-11-13 16:24:16	Alarm log	Acceleration sensor alarm
8	2014-11-13 16:24:16	Alarm log	Acceleration sensor alarm
9	2014-11-13 16:24:21	Alarm log	Acceleration sensor alarm
10	2014-11-13 16:24:21	Alarm log	Acceleration sensor alarm
11	2014-11-13 16:24:21	Alarm log	Acceleration sensor alarm
12	2014-11-13 16:24:22	Alarm log	Acceleration sensor alarm
13	2014-11-13 16:24:40	Alarm log	Acceleration sensor alarm
14	2014-11-13 16:24:40	Alarm log	Acceleration sensor alarm
15	2014-11-13 16:24:40	Alarm log	Acceleration sensor alarm
16	2014-11-13 16:24:43	Alarm log	Acceleration sensor alarm
17	2014-11-13 16:24:43	Alarm log	Acceleration sensor alarm
18	2014-11-13 16:24:44	Alarm log	Acceleration sensor alarm

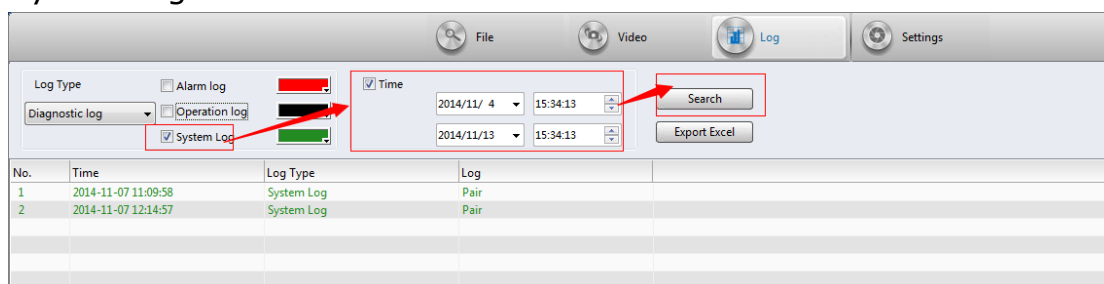
You can double click on the Alarm Log line to open the corresponding video providing that the timeframe for that selection is playing.

Operate log :



No.	Time	Log Type	Log
1	2014-11-13 11:16:42	Operation log	Network Settings
2	2014-11-13 11:42:53	Operation log	Network Settings
3	2014-11-13 11:46:43	Operation log	Network Settings
4	2014-11-13 14:15:04	Operation log	Wireless settings
5	2014-11-13 14:19:59	Operation log	Wireless settings
6	2014-11-13 14:27:25	Operation log	Wireless settings
7	2014-11-13 14:35:15	Operation log	Wireless settings
8	2014-11-13 14:36:44	Operation log	Playback file
9	2014-11-13 14:39:48	Operation log	Playback file
10	2014-11-13 14:45:16	Operation log	Wireless settings
11	2014-11-13 14:46:30	Operation log	Wireless settings
12	2014-11-13 14:50:25	Operation log	Video General Settings
13	2014-11-13 15:02:20	Operation log	Network Settings
14	2014-11-13 15:05:03	Operation log	Network Settings
15	2014-11-13 15:16:17	Operation log	Restore the factory settings
16	2014-11-13 15:19:48	Operation log	Playback file

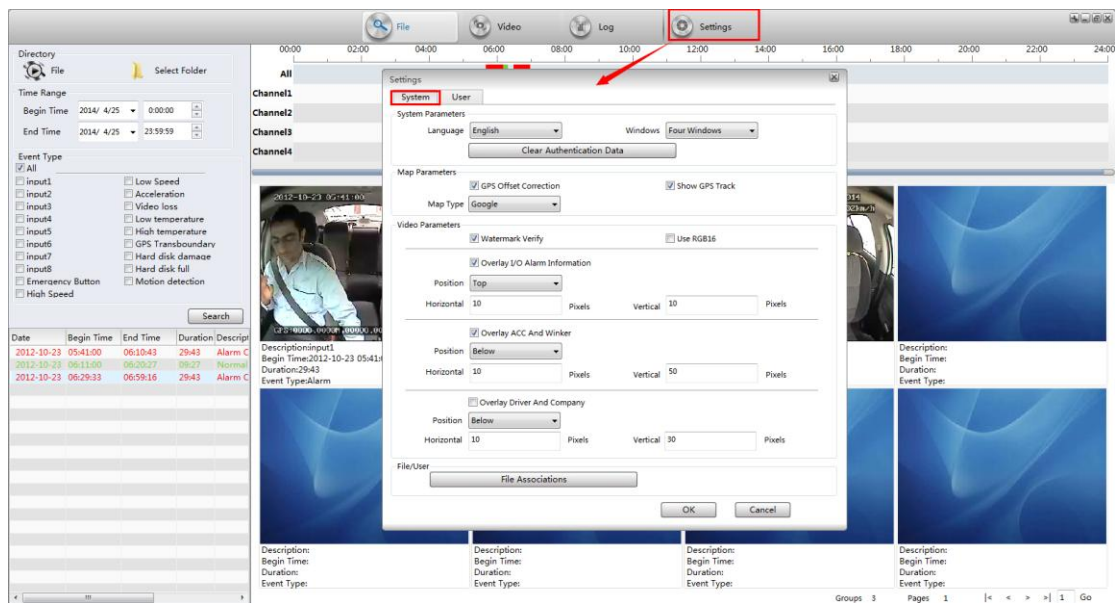
System log :



No.	Time	Log Type	Log
1	2014-11-07 11:09:58	System Log	Pair
2	2014-11-07 12:14:57	System Log	Pair

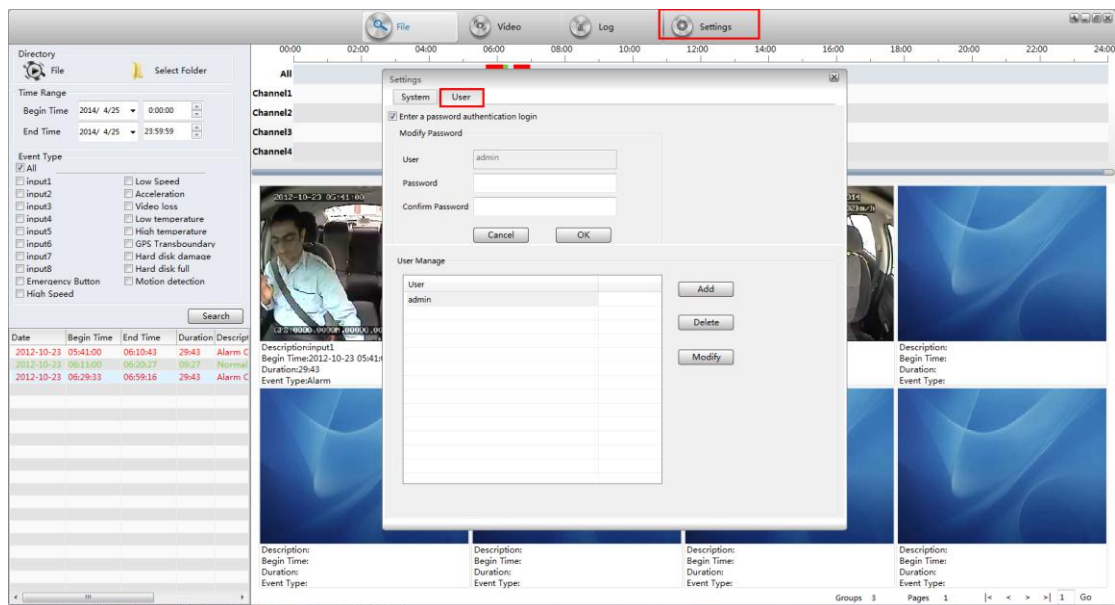
4. System setup

- Language: The MDVR Player supports Chinese Simplified, English, Chinese Traditional, Thai, and Turkish.
- Associated files: Supports the playback of various video file formats.
- Map : Supports Baidu map, Google, MapInfo. Select Google Map Only.
- Video Parameters : Users can set video parameters according to your requirements, and users can view parameters when you playback video files.



5. Users Management

Login with admin, administrator can add users, delete users and alter users including altering password.



End – Request your webinar training session soon.